



## INFORMATION FOR EXHIBITORS



Thank you for participating in Carlisle's inaugural Route to Sustainability Day!

Please consider publicizing this event through your outreach network. You will find a basic publicity blurb below - feel free to tailor it to your specifications.

### TABLING INFORMATION :

- The ESC is providing one 8' table and two folding chairs (unless otherwise discussed with Christina) per exhibitor. Exhibitors are responsible for their display and any associated needs.
- A table plan and your specific table number will be sent out in the near future.
- Exhibitors will have access to their table from 8:00am to 9:40am on April 22 for setting up their display. The ESC requests that set-up be complete by 9:45am. Dismantling can commence after 2:00pm.
- Tables at the Town Common, Solar Canopy and Library will be in place Friday evening (after 6:30pm), should anyone wish to scout the layout beforehand. Exhibitors are welcome to leave items on or beneath their assigned table on Friday evening but acknowledge that they do so at their own risk since no security is provided.
- Exhibitors can drive close to their location to unload until 9:30am and to load after 2:00pm. The block of School Street between Route 225 and Church Street in front of Union Hall will be closed to vehicles from 9:30am until 2:00pm.
- The ESC recommends you take into consideration the possibility of a breeze by securing your display with weights, twine, etc.
- Most tables at the Solar Canopy and Library will be rented wood-topped folding tables. Please refrain from using tape other than low-adhesive painter's tape since stronger adhesives can lift the finish.
- You are welcome to bring table coverings of your choice.
- You are also welcome to bring a 10'x10' pop-up tent or similar shade tent to place over your display (exhibitor tables at the Solar Canopy will be under the canopy). Bringing some weights to secure it in case of wind is advisable.
- The ESC suggests reducing the amount of waste and materials by replacing handouts with QR codes and urging attendees to take photos of the information displayed.

### QR code instructions:

You will need the website address for the site you want the QR code to link to. Take it to any online QR code generator such as <https://www.qr-code-generator.com>. Just choose URL from the options, paste your URL into the 'enter your website' field and then click on the download button. It will go to your downloads and open on your computer screen. Save it to your computer and then you can drag it into word documents and size it as you please.

- If possible, please try to track the type of questions asked by attendees. This information will be helpful for future ESC community outreach (and possibly for you too!)
- Please help out our volunteers and leave the table, chairs and the ground around your display in the condition in which you found them.

#### EXHIBITOR PARKING:

Please allow time to park and walk back to your table and be ready by 9:45am.

- Town Common exhibitors can park at Town Hall (66 Westford St).
- Solar Canopy exhibitors can park in the lower, uncovered parking portion of the Solar Canopy parking lot (Church St)
- Gleason Library exhibitors can park either at Town Hall or in the lower, uncovered parking portion of the Solar Canopy
- Fire Station exhibitors can park at Town Hall
- Friends of Center Park exhibitors can park at Center Park (42 Lowell St)

Please try to leave Church Street parking available for people with mobility issues and the Library parking area for regular Library business parking.

#### VENUE INFORMATION:

- Restrooms will be available in Union Hall, the Carlisle School via the Plaza entrance, the Brick Building on the school campus, Gleason Library and the Fire Department.
- Water bottles can be refilled at the Library and the Fire Station.

#### RAIN CONTINGENCY:

In the event of rain or severe winds, exhibits will be moved indoors:

- Town Common tables will move to the Brick Building and Union Hall
- Solar Canopy tables will move to the school breezeway
- Gleason Library tables will move to the third floor and other parts of the library
- Fire Department tables will move into the bay



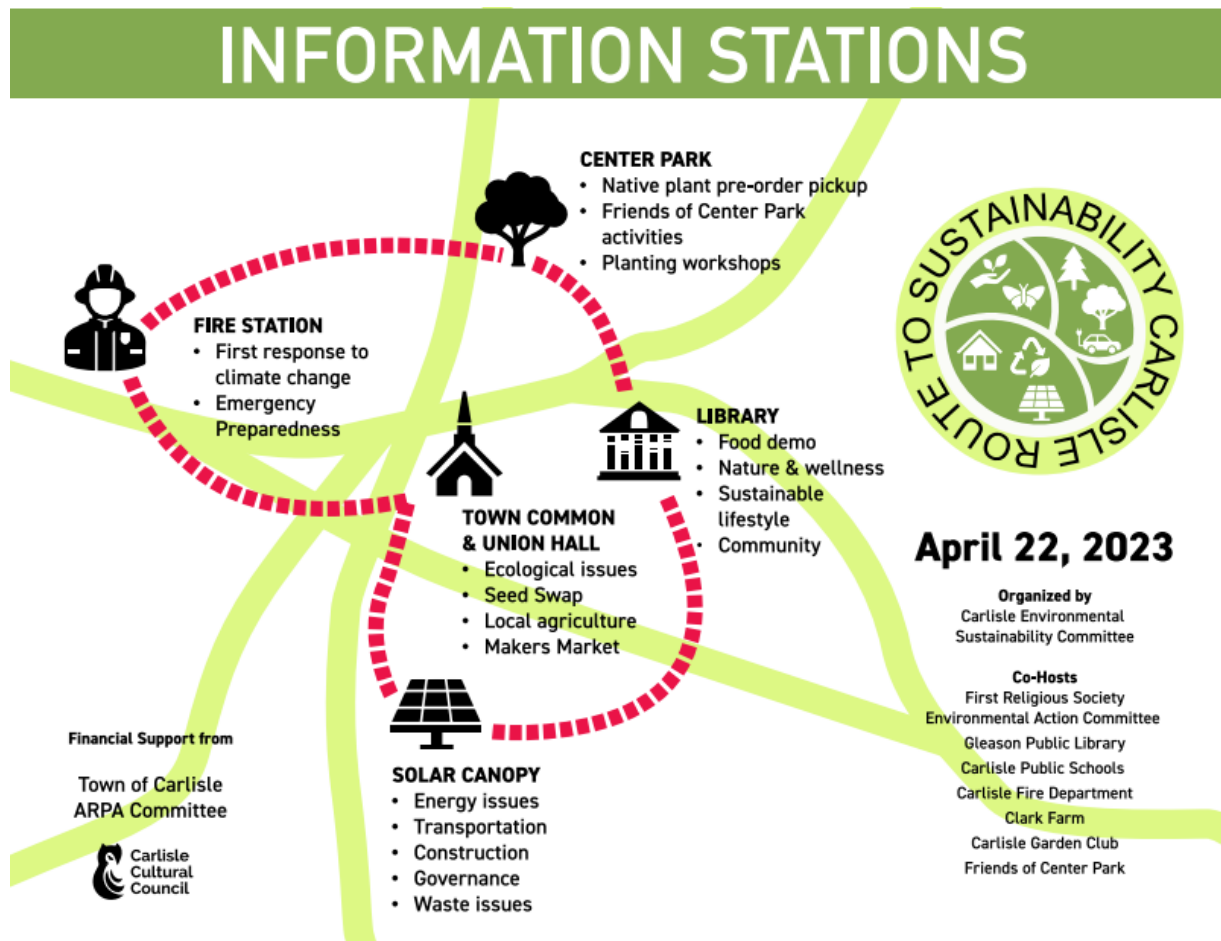
Route to Sustainability Day is on April 22, 2023, Earth Day, 10:00-2:00 in the Center of Carlisle.

Come find out how you can lower your carbon footprint; come explore ways to be good stewards of your land; come taste how a healthier lifestyle can be good for you and the planet; come learn ways first responders are preparing for changes in climate; come participate in a scavenger hunt..... and so much more fun and information for all ages!

“Green” choices you can make on the day include walking/biking to the event, bringing a water bottle and taking photos of the information instead of paper pamphlets.



More details on Carlisle's Environmental Sustainability Committee's [webpage](#). Keep checking since information is continuously updated!





# LIST OF EXHIBITORS

## TOWN COMMON (27 SCHOOL STREET)

EXHIBITOR	TOPIC
<b>NATURAL ENVIRONMENT/ECOLOGY/HABITAT</b>	
Andrew Joslin	Importance of forest ecosystems, carbon sequestration, follow-on forest ecosystem walk
Backyard Invasives	Invasive plants and eco-friendly removal, specimens, follow-on invasives and native plant walks
Board of Health	Water quality, drought issues
Concord Carlisle High School Green Team	Composting, native plant interactive board, follow-on May pollinator garden tour
Conservation Commission	Pending
Conservation Restriction Advisory Committee	Conservation restrictions
Garden Club	Seed swap, tree scavenger hunt, information
iNaturalist display	Upload a species challenge
Judy Asarkoff	Insects (and part time LSC)
Kay Hurley	Fungi
Land Stewardship Committee	Protecting and enhancing Town-owned conservation lands
Mass Audubon MetroWest Wildlife Education Center	Live wildlife exhibit and information
Minuteman Vocational School, Environmental Program	Ecological sustainability, water conserving agriculture, interactive water monitoring display
The "bug table"	Information on insects
Walter Kittridge	Importance of native plant ecosystems, youth interactive displays, follow-on May Towle Field walk
Xerces Society	Pending
<b>AGRICULTURE</b>	
Carlisle Farmer's Market	Grow/buy local
Clark Farm	Information pending
Sweet Autumn Farm	Sustainable agriculture
<b>FOOD VENDOR</b>	
Fern's	Boxed lunches for sale

## UNION HALL (27 SCHOOL STREET)

EXHIBITOR	TOPIC
First Religious Society Environmental Action Committee	Information pending
Maker's Market	Various local artisans

## SCHOOL SOLAR CANOPY (CHURCH STREET)

EXHIBITOR	TOPIC
<b>CARBON FOOTPRINT/ENERGY</b>	
Bob Zogg	Electrification, HeatSmart Alliance
EcoQuiet Lawn Care	Commercial lawn company electric equipment
Electric yard equipment petting zoo	Residential electric and battery yard equipment display
HomeWorks Energy	Home assessments, weatherization (subject to Select Board approval)
Insulation options	Display
Sue Thomas & Claude Von Roesgen	Renewable energy options, solar canopy and charging station information
<b>CONSTRUCTION</b>	
Adams & Beasley	Sustainable construction
Debbie Bentley	Embedded carbon
Embedded carbon display	Historical Society items display
Glenn Reed	Opt-in Specialized Stretch Code information
Jon Metivier	Current Stretch code
<b>MOBILITY/TRANSPORTATION</b>	
Electric vehicle display	
Electric bike and bicycle display	
Council on Aging and Human Services	Shuttle display
Eric Balles	Sustainable mobility, first mile/last mile, incentives

## SCHOOL SOLAR CANOPY (CHURCH STREET)- continued

<b>GOVERNANCE</b>	
Jack Troast	Master Plan
Launa Zimmaro	State and federal laws, incentives, tax credits
Municipal Facilities Committee	Information pending
Planning Board	Municipal Vulnerability Plan, accessory apartments, Master Plan
Town Administration	Sustainable efforts
<b>WASTE</b>	
DPW	Pending
Environmental Ministry Concord Carlisle Catholic Collaborative	Recycling
Transfer Station Action Committee	Composting initiative, waste reduction for events
<b>FOOD VENDOR</b>	
Clover	Boxed lunches for sale

## GLEASON PUBLIC LIBRARY (22 BEDFORD ROAD)

EXHIBITOR	TOPIC
<b>COMMUNITY</b>	
Boy Scouts	Bat houses, trash collection, boardwalks
Cultural Council	Drawing activity
Girl Scouts	Info pending
Gleason Library	Resources, library of things, kid activities
The Mosquito	Sale of "Who's Who" book
<b>ECO LIFESTYLE</b>	
Boston Vegetarian Society (pending)	Why adopt a low-carbon diet
Chef Kelcy	Vegetarian <b>cooking demonstration</b> on induction cooktop
Eco-friendly household alternatives	Display
<b>NATURE AND WELLNESS</b>	
Friends of Bruce Freeman Rail Trail	Trail promotion
SuAsCo	Rivers and upcoming projects
Trails Committee	Promotion of trails, sale of maps

## **FIRE STATION (80 WESTFORD STREET)**

<b>EXHIBITOR</b>	<b>TOPIC</b>
<b>FIRST RESPONSE TO CLIMATE ISSUES</b>	
Fire Department	Planning for climate changes, wildfires, drought, chemicals, equipment displays
Police Department	Anti-idling devices, kid activities, hybrid cruiser display

## **CENTER PARK (42 LOWELL STREET)**

<b>EXHIBITOR</b>	<b>TOPIC</b>
Friends of Center Park	Native plant pre-order pick-up
	Planting workshops

